

LIGHTING LEGEND

	MANUFACTURER	FITTING NAME	INSTALLATION METHOD	IP RATING	FINISH (*)
F1	CLEVERTRONICS	ARGONAUT PRO WP 600mmL	SURFACE MOUNTED	IP65	GREY
Ⓞ	ROBUS	VEGA GEN2 LED BULKHEAD	SURFACE MOUNTED	IP65	WHITE

	MANUFACTURERS	FITTING NAME	CAT. NO.	INSTALLATION METHOD	IP RATING
E1	CLEVERTRONICS OR APPROVED EQUAL	LP LIFELIGHT PRO IP65	CLIFE-PRO -SM-WP (CT PLUS)	SURFACE MOUNTED	IP65

EXISTING SERVICES LEGEND

- Ex DB EXISTING DISTRIBUTION BOARD
- CREx EXISTING COMMS HUB
- Ex ExP EXISTING SECURITY EXPANDER PANEL

ABBREVIATIONS

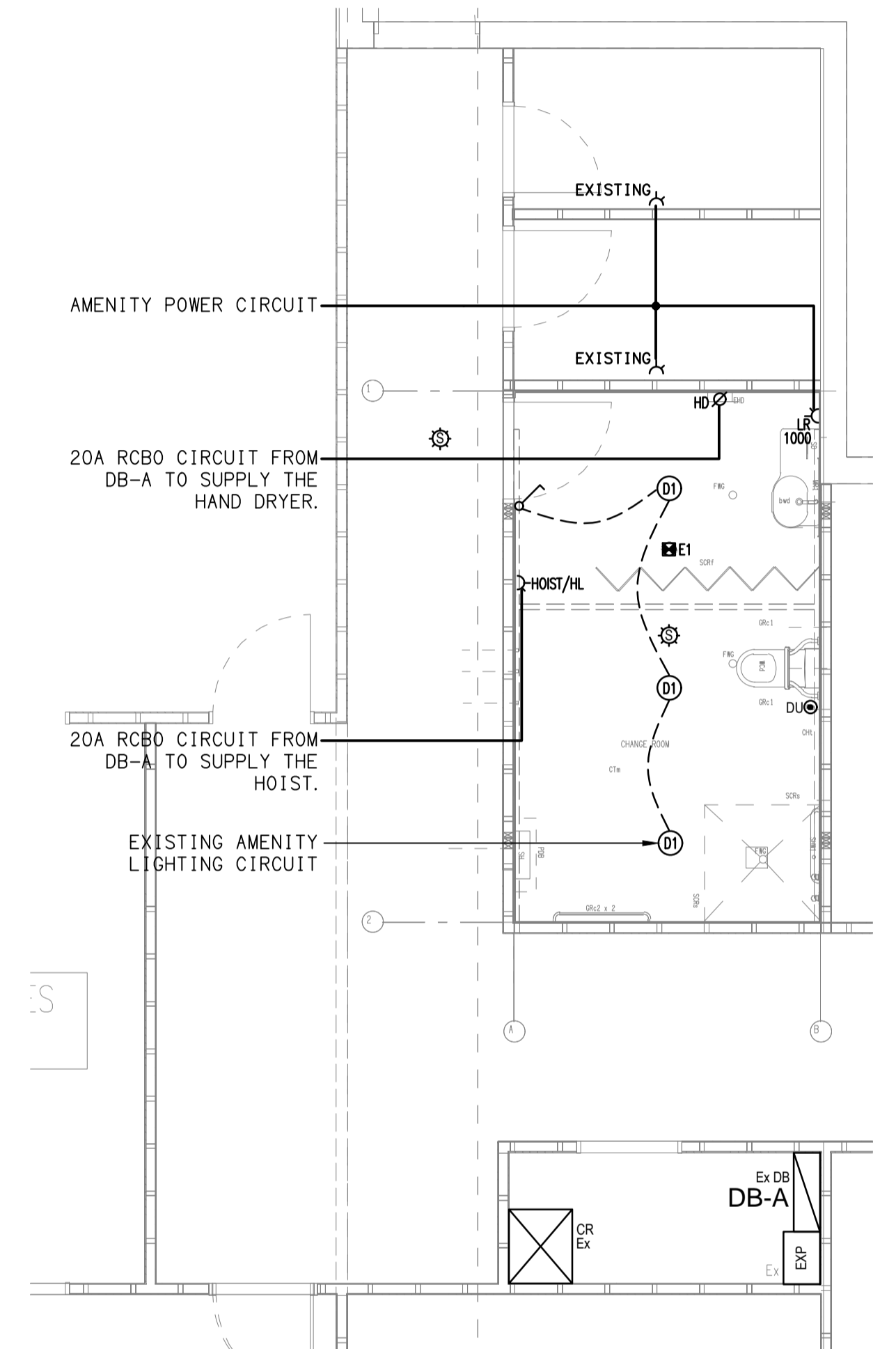
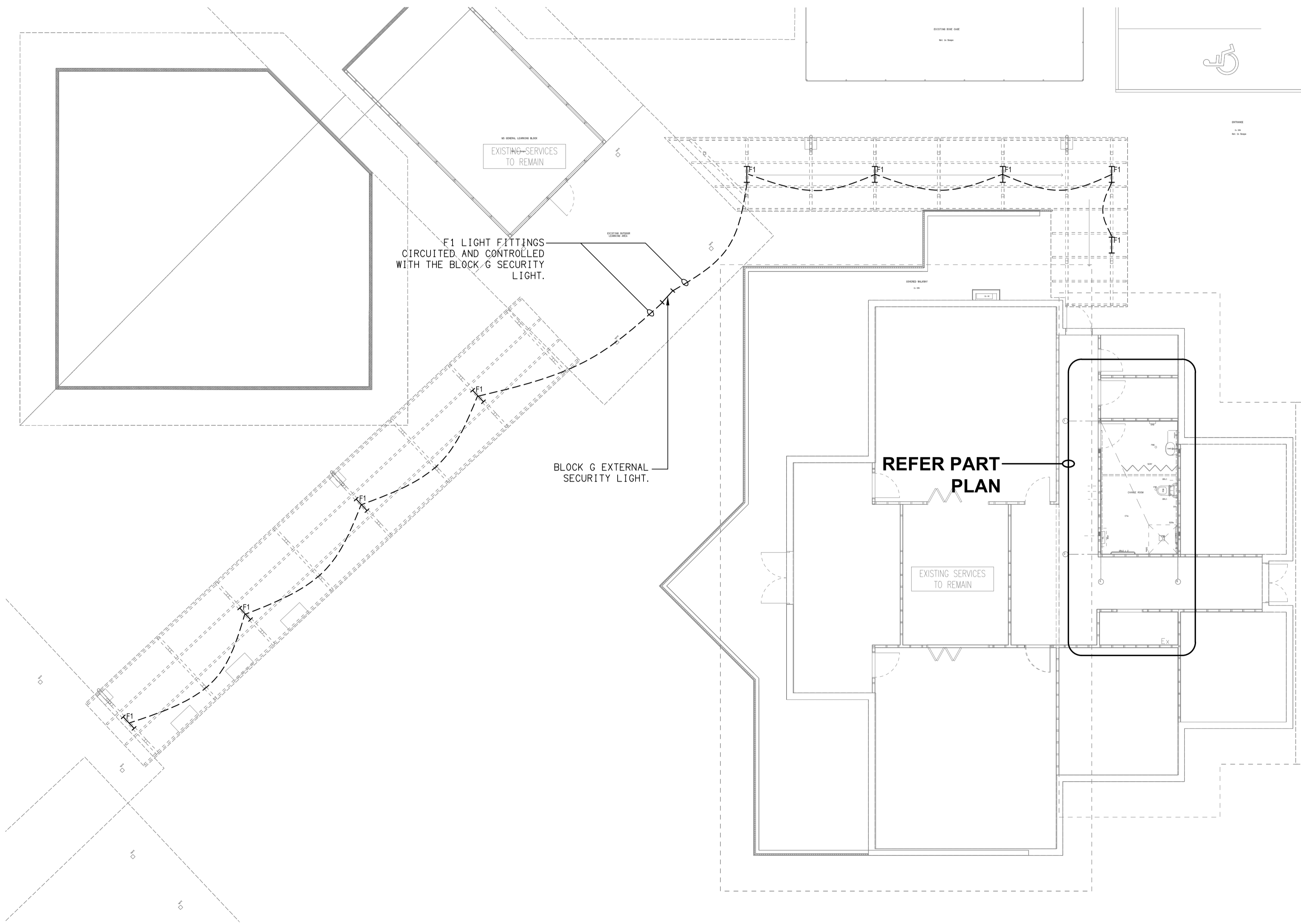
- 500 - MOUNTED 500mm AFL
- COMMS - COMMUNICATIONS
- EX - EXISTING
- GPO - SWITCHED SOCKET OUTLET
- HD - HAND DRYER
- HL - HIGH LEVEL
- LR - LARGE ROCKER
- n - QUANTITY
- PE - PHOTO ELECTRIC CELL

POWER LEGEND

- ⚡ 10A DOUBLE SWITCH SOCKET OUTLET C/W SAFETY SHUTTER OVER ACTIVE, AND CAPABLE TO BE USED BY EITHER TWO PIN OR THREE PIN PLUGS. MOUNT AT 500mm AFL TO CENTRE OF OUTLET U.N.O. TYPE: CLIPSAL STANDARD RANGE
- ⊘ SINGLE PHASE PERMANENT CONNECTION C/W ADJACENT IP RATED ISOLATOR TYPE: CLIPSAL 56 SERIES

ELECTRONIC SECURITY LEGEND

- 🚨 SECURITY SIREN ALARM AND BLUE STROBE, C/W SEPARATE DEDICATED BATTERY, SOUND LEVEL OUTPUT 130dB AT 1M, & 2 OFF PROTECTIVE ENCLOSURES. TYPE: TECHNOALARM BRAND OR APPROVED EQUAL
- 🔑 DURESS BUTTON, FIXED DURESS ACTUATORS SHALL BE OF STAINLESS STEEL CONSTRUCTION AND WITH A MECHANICALLY LATCHING, KEY-RESETABLE DPDT SWITCH. ALL ACTUATOR RESET MECHANISMS ARE TO BE COMMON-KEYED. SUPPLY THE INSPECTING OFFICER WITH ONE KEY PER DURESS ACTUATOR AT THE TIME OF SYSTEM COMMISSIONING. TYPE: ADEMCO STYLE, SEDAN SECURITY SMART 003



PART PLAN
ELECTRICAL WORKS
SCALE 1:50

ELECTRICAL DESIGN GROUP BRISBANE PTY LTD
ACN 092 710 793
TRADING AS:
ELECTRICAL DESIGN GROUP

THE COPYRIGHT OF THIS DRAWING REMAINS THE PROPERTY OF THE ELECTRICAL DESIGN GROUP.
USE FIGURED DIMENSIONS IN PREFERENCE TO SCALE.
ALL DIMENSIONS TO BE VERIFIED ONSITE.



E: info@aswelectrical.com.au
M: 0450 440 569
www.aswelectrical.com.au

ELECTRICAL DESIGN GROUP
ELECTRICAL BUILDING SERVICES CONSULTANTS
BRISBANE GOLD COAST

P.O. Box 15, Sherwood Q.4075
Phone: (07) 3278 4375
Email: brisbane@edg.net.au
Web: www.edg.net.au

PROJECT:
WOODCREST STATE COLLEGE
CHANGE FACILITY & COVERED WALKWAYS

38 NEV SMITH DRIVE, SPRINGFIELD, QUEENSLAND

1	AS CONSTRUCTED	28/02/2025
REV:	DESCRIPTION:	DATE:

DRAWING:
ELECTRICAL SERVICES
ELECTRICAL WORKS PLAN

SCALE:
1:100 & 1:50 AT A1

PROJECT NO:
C3429a

DRAWING NO:
E01

REVISION:
1